



GAT MONTHLY MEMBERSHIP PROGRESS REPORT

Results as of: 5/31/2022

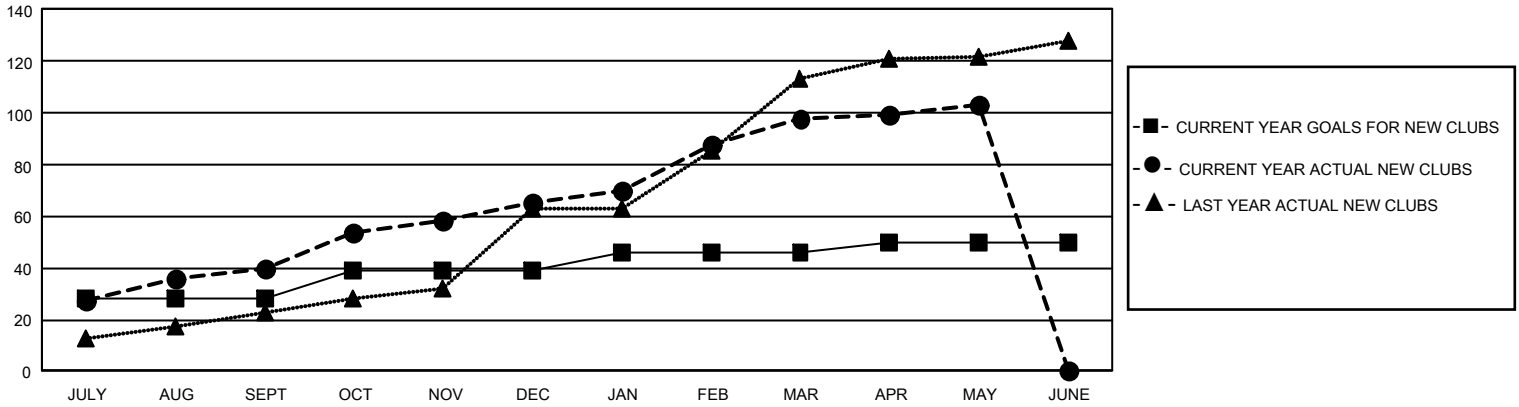
GMT Constitutional Area 6, Group I

REPORT DOES NOT INCLUDE CLUBS IN UNDISTRICTED AREAS.

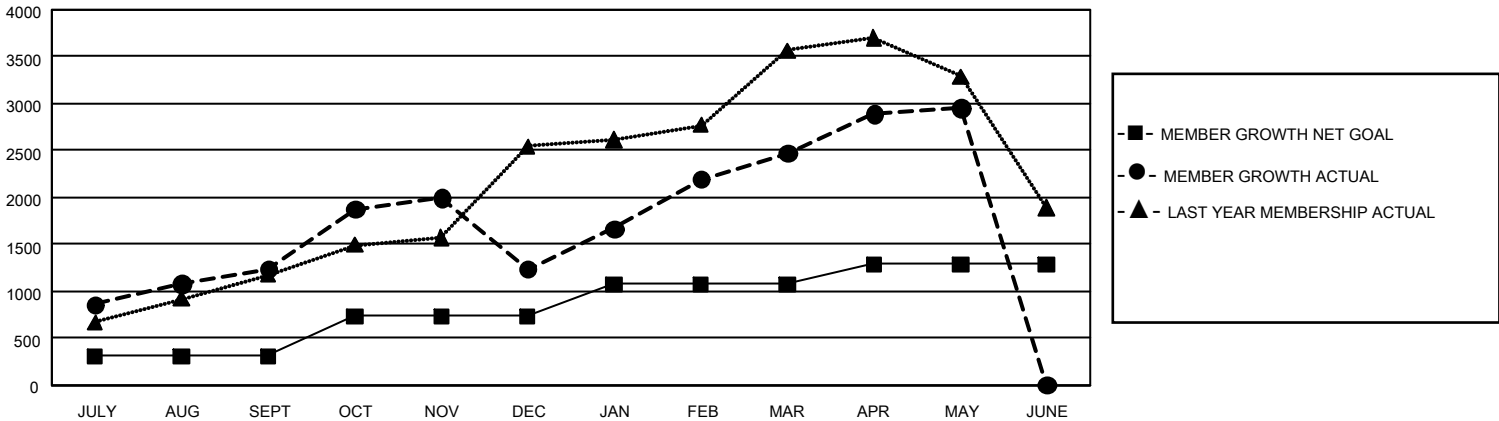
Clubs			
RESULTS FOR 2021-2022			
QUARTER	NEW CLUB GOAL	NEW CLUBS	DROPPED CLUBS
JULY/AUG/SEPT	84	40	10
OCT/NOV/DEC	33	25	34
JAN/FEB/MAR	21	33	4
APR/MAY/JUNE	12	5	0

Members			
RESULTS FOR 2021-2022			
QUARTER	MEMBER GROWTH NET GOAL	MEMBER GROWTH ACTUAL	DROPPED MEMBERS ACTUAL (including transfers)
JULY/AUG/SEPT	305	1,934	565
OCT/NOV/DEC	430	1,162	1,141
JAN/FEB/MAR	340	1,546	165
APR/MAY/JUNE	210	784	250

GOALS AND ACTUAL NEW CLUBS CUMULATIVE



GOALS AND ACTUAL MEMBERS CUMULATIVE



DROPPED CLUBS: 48	426 CLUBS OF 695 ADDED 1 OR MORE NEW MEMBERS	GENDER DISTRIBUTION	
		MALE 16,175 (72.68%) FEMALE 6,081 (27.32%) NON BINARY 0 (0.00%) PREFER NOT TO ANSWER 0 (0.00%)	
DROPPED MEMBERS		CLICK HERE FOR CUMULATIVE MEMBERSHIP DATA	TOTAL FAMILY UNIT MEMBERS 11,214
DECEASED 59 CLUB CANCELLED 806 OTHER 1,256 TOTAL 2,121			FAMILY MEMBERS PAYING HALF DUES 6,483